

Donation goes towards support for disabilities

ELVIN JAMES RECENTLY received a donation of Vt100,000 to assist her to travel to New Zealand on exchange with the Mangere East Family Centre in Auckland.

The family centre includes an early childhood care and education centre and is situated in an area with a large Pacific Islander population. Working closely with parents to improve the educational opportunities for children is

one of the focus areas for the centre.

Ms James, the Coordinator for Partnering with Parents at Pikinini Playtime, said she is very excited to receive such a large donation toward her training.

"This donation will help me develop the skills I need to work more closely with parents.

"At our school we partner with parents to provide children with the best possi-

ble education and parents in Vanuatu have many challenges they need help to overcome.

"The families of our children with disabilities face even greater challenges and there are very few places these parents can go for assistance.

"We hope we can help them to make good use of our Disability Support Program and see their children get a quality education that will

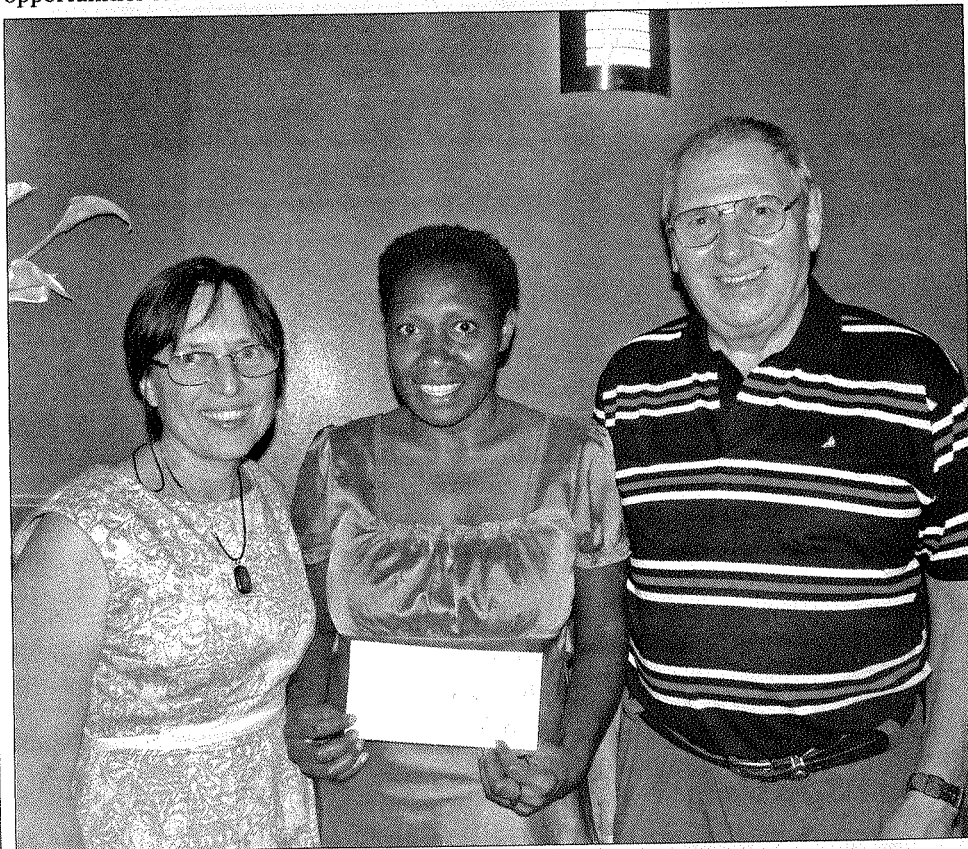
give them the best chance of prospering in the future."

The donation was made by Environmental Risk Science and Audit (ERSA) Pty Ltd. ERSA is one of Australia's leading performance audit and disaster risk management consultancies and is focussed on developing safe and resilient communities. At a small ceremony last week ERSA Chairman, Ken Granger, said "Developing resilience with-

in communities is a part of what we do. Resilient communities can care for themselves by using their own resources. They are better able to respond and recover after a disaster no matter what the causes. We could have supported one or two children but believe that supporting Elvin to develop her skills will enable her to help many parents and their children over time. We have

been very encouraged seeing the progress that is being made through the school's Disability Support Program and we welcome this opportunity to be able to contribute. I hope more businesses will see the opportunities and come on board."

Elvin James is planning to travel to New Zealand in the summer to take up her exchange with Mangere East Family Centre.

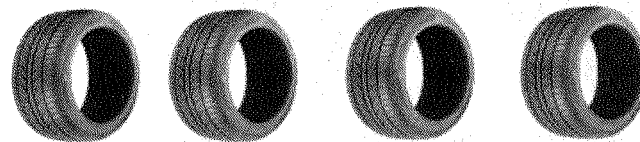


Carol Batten, Elvin James and Chairman of ERSA, Ken Granger presenting a cheque for Vt100,000

Vanuatu Tyre Wholesalers

Namba 2 Lagoon: 24141, Tebakor: 24140 Mob: 7769546

**2000+ tyres
in stock right now !**



**if we haven't got it, we can
guarantee delivery within**